

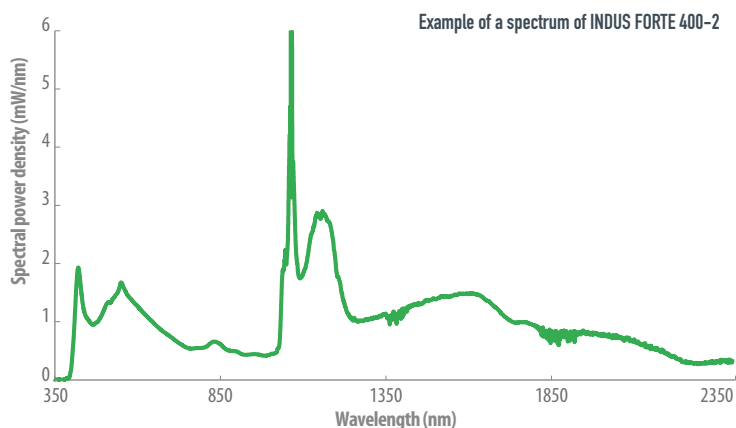
INDUS

INDUSTRIAL SUPERCONTINUUM LASER

— Supercontinuum lasers
— INDUSTRIAL
— INDUS



The **INDUS SERIES** is an OEM design of our Rock and Samba laser. The **INDUS FORTE** and **INDUS PIANO** lasers are designed specially for integration in industrial systems.



FEATURES

From UV to NIR 350 - 2400 nm

From mW to several W

From pulse on demand to several tens of MHz

Compact design

Spatially single mode

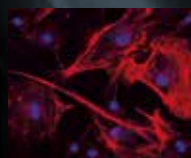
Maintenance-free

APPLICATIONS

Time-resolved spectroscopy

OCT

Metrology



LEUKOS

Make a bright future

INDUS

INDUSTRIAL SUPERCONTINUUM LASER

Compact and robust, maintenance-free, **INDUS FORTE** and **INDUS PIANO** are easy to integrate in a microscope, a flow cytometer or a metrological tool.

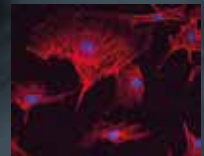
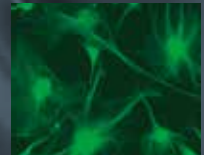
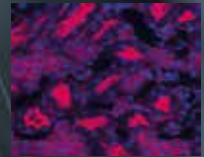
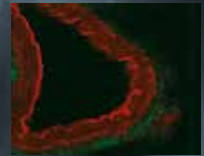
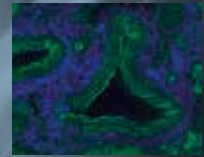
- Supercontinuum lasers
- INDUSTRIAL
- **INDUS**



ADDITIONAL EQUIPMENT

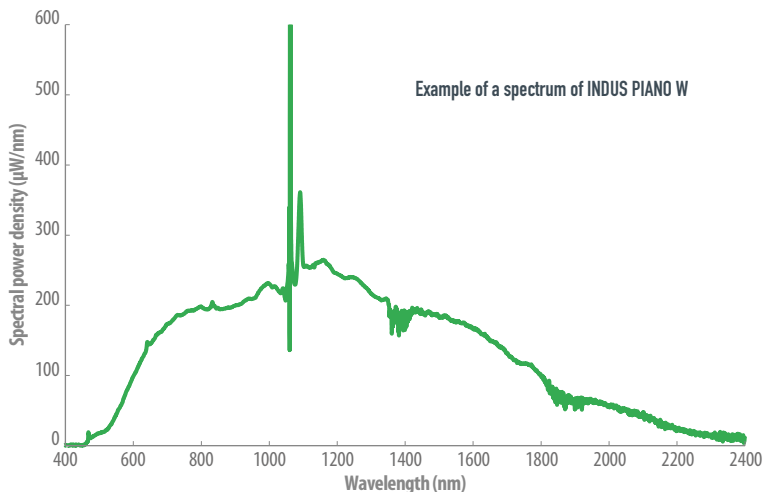
- Achromatic collimated output
- Easy fiber coupling with Pop
- Tunable filters : AOTF, monochromators, custom

OPTICAL SPECIFICATIONS		INDUS PIANO 450	INDUS FORTE 2
Spectral bandwidth	mini	< 450nm	< 410nm
	max	> 2400 nm	> 2300 nm
Total average power		> 150 mW	> 2 W
Repetition rate		> 25 kHz (typ. 30 kHz)	20 MHz or 40 MHz
Seed pulse width		~ 1 ns	6ps
Power stability		< 1.5%	
Spatial mode		Singlemode	
Polarization state		Unpolarized	
Output connection		FC/APC connector	FC/APC collimator (~1m armored cable)
Synchronization output		External output trigger	External output trigger BNC connector (output panel)
OTHER SPECIFICATIONS			
Control interface		RS232	USB
Operating temperature		-10°C to +50°C non condensing	+15°C to +35°C non condensing
Weight		< 2 kg	< 8 kg
Dimensions (LxWxh)		130x95x85 mm	315x279x140 mm
Power requirements		12 V	24 V



AVAILABLE ON

SAMBA lasers / ROCK lasers



All specifications are subject to change without notice



CAUTION – VISIBLE AND INVISIBLE LASER RADIATION AVOID EYE AND SKIN EXPOSURE TO DIRECT OR SCATTERED RADIATION CLASS 4 LASER PRODUCT

LEUKOS
Make a bright future

+33 (0)5 87 20 00 25
contactus@leukos-systems.com
www.leukos-systems.com